

REF.:5412

Andorra | Sotheby's
INTERNATIONAL REALTY

Incomparable Xalet for sale in Pal, Andorra

Andorra - Pal

Superficie	Habitaciones	Baños	Precio
446 m²	6	4	1.950.000 €

Contáctenos para recibir más
información o solicitar una visita

+376 872 222

info@sir.ad



Incomparable Xalet for sale in Pal, Andorra

Andorra - Pal

Superficie	Habitaciones	Baños	Precio
446 m²	6	4	1.950.000 €

Contáctenos para recibir más información o solicitar una visita

+376 872 222
info@sir.ad

This exceptional, large chalet, in Andorra, is now for sale. It sits in a stunning location on the edge of the village of Pal, in the heart of the Pyrenees, in the parish of La Massana. The chalet is 5 minutes from the Pal ski area, which forms part of the Vallnord ski sector. It is also only 1 kilometre from the 9 hole Xixeralla golf course. This magnificent property is built on a plot of 358 m2. The chalet is rustic in style with modern nuances and has a built area of 445 m2 on 4 floors which are connected either by a 6 man lift or a staircase. The property has top quality specifications throughout and yet retains the charm and atmosphere of a mountain chalet. It has excellent natural light, high ceilings and spacious rooms. The floors of the halls and stairs are faced in marble and the bedrooms have parquet flooring. Access to the property is on the ground floor either through the garage or the front door which leads through the hall to the staircase. Off this hall is a wine cellar and a small room housing the lift equipment. Also accessed from the hall is the lift, for 6 persons, which serves all 4 floors. Access to the hall is also available directly from the large, 6 car garage, which also houses the boiler room and a 3,000 litre oil tank. On the First floor is a large, double aspect living and dining room with its impressive stone faced German fireplace. Double doors open out onto the captivating main terrace that wraps around the front of the property from where there is a south facing panoramic view of the mountains and the Pal ski slopes. Next to the living room is the large and light filled kitchen with double doors that also open onto the front terrace. The cabinets are rustic in style with quartz work tops, inbuilt induction hob and 2 electric ovens. Beside the kitchen is a fully tiled shower room and toilet with custom made joinery. Opposite the shower room is the shelved pantry. At the end of this hallway is the study / library / 6th bedroom, again with expertly crafted joinery for the library. On the Second floor is the master bedroom with a fully tiled en suite walk-in shower. There is a second double bedroom, walk-in wardrobe and an adjacent fully tiled shower room. There is a third double bedroom with a walk-in wardrobe and a door leading to its own terrace adjacent to the forest. Furthermore there is a generous sized laundry room on this floor which opens onto its own terrace. The Third floor has two more generous double bedrooms, one of which has its own walk-in wardrobe. Both these bedrooms open onto a magical, Swiss styled balcony, from whence you can contemplate the views of the Pal ski slopes. There is a fully tiled bathroom and a small storeroom - a further small room, adjacent to the exterior rear door, currently serves as a coffee station. This rear door opens onto yet more terracing with a small gate that leads directly into the forest. A granite staircase leads up to the property's vegetable plot. In this exclusive, laterally constructed, chalet, the quality of the stone faced exteriors and the high standard of the interior finishes, make it exceptional. The principal terrace, with its covered pergola, makes a perfect venue for entertaining friends and family in the summer, set in the peace and tranquility of the mountains.

Características

- | | | |
|--------------------|------------------------------------|---------------|
| ✓ Terrassa | ✓ Parking | ✓ Jardí |
| ✓ Ascensor | ✓ Vistes a la muntanya | ✓ Llar de foc |
| ✓ Zona verda | ✓ Traster | ✓ Doble vidre |
| ✓ Armari encastats | ✓ Assolellat | ✓ Safareig |
| ✓ Despatx | ✓ Ascensor adaptat cadira de rodes | |

REF.:5412

Andorra | Sotheby's
INTERNATIONAL REALTY

Incomparable Xalet for sale in Pal, Andorra

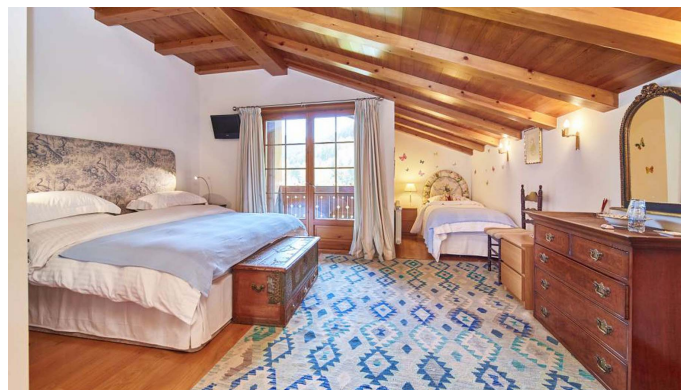
Andorra - Pal

Superficie	Habitaciones	Baños	Precio
446 m²	6	4	1.950.000 €

Contáctenos para recibir más
información o solicitar una visita

+376 872 222

info@sir.ad



Sotheby's International Realty® is a registered trademark licensed to Sotheby's International Realty Affiliates LLC. Each Sotheby's International Realty® office is independently owned and operated.

Andorra Sotheby's International Realty
Calle Santa Anna, 14 AD700 Escaldes-Engordany Principado de Andorra
Tel: +376 872 222 · Email: info@sir.ad

www.andorra-sothebysrealty.com