

REF.:5708

Andorra | Sotheby's  
INTERNATIONAL REALTY

## Ground floor of new construction to buy in the center of Encamp

Andorra - Encamp

Superficie	Habitaciones	Baños	Precio
<b>100 m<sup>2</sup></b>	<b>3</b>	<b>2</b>	<b>510.000 €</b>

Contáctenos para recibir más información o solicitar una visita

+376 872 222

info@sir.ad



# Ground floor of new construction to buy in the center of Encamp

Andorra - Encamp

Superficie	Habitaciones	Baños	Precio
<b>100 m<sup>2</sup></b>	<b>3</b>	<b>2</b>	<b>510.000 €</b>

Contáctenos para recibir más información o solicitar una visita

+376 872 222  
info@sir.ad

Next Promotion of new work under construction located in the middle of the village of Encamp, one of the most important residential areas in the country since the center of the town is located a few kilometers from the nerve center of the country. Ideally located in the heart of the village, this promotion is close to schools, sports centers, shops, services and green areas. In addition to providing quick access from the center of the town to either of the two borders (France/Spain), and being in the Parish where the longest domain of the Pyrenees and southern Europe is located. It is a property of 100 m2 with a spacious living-dining room with a fully equipped kitchen and open to the living room; exit to a large terrace-garden of 55 m2. The night area is divided into three rooms, one of which is en suite. The other two, one is double, and the single alytre, both with built-in wardrobes. This area is complemented by another full bathroom and laundry area. The material finishes and equipment are minimalistic, functional and of high quality, such as the underfloor heating with an aerothermia system or similar, the electric blinds or the double-glazed windows. The kitchen with the silestone work area is fully equipped with vitro, oven, microwave, dishwasher and refrigerator. Its orientation is east so the sun hits from sunrise to noon. For your total comfort, this property has two parking spaces in the same building.

## Características

- ✓ Parquet
- ✓ Ascensor adaptat cadira de rodes
- ✓ Assolellat
- ✓ Transport públic aprop
- ✓ Parking cobert
- ✓ sòl radiant
- ✓ Doble vidre
- ✓ Terrassa
- ✓ Vistes ciutat
- ✓ Safareig
- ✓ Armari encastats
- ✓ Jardí
- ✓ Electrodomestics



REF.:5708

Andorra | Sotheby's  
INTERNATIONAL REALTY

## Ground floor of new construction to buy in the center of Encamp

Andorra - Encamp

Superficie	Habitaciones	Baños	Precio
<b>100 m<sup>2</sup></b>	<b>3</b>	<b>2</b>	<b>510.000 €</b>

Contáctenos para recibir más información o solicitar una visita

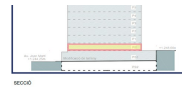
+376 872 222

info@sir.ad



- 2 BANYS  
- 2 PLACES APARCAMENT

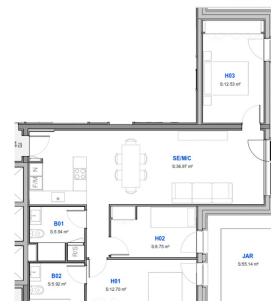
CARACTERÍSTICAS



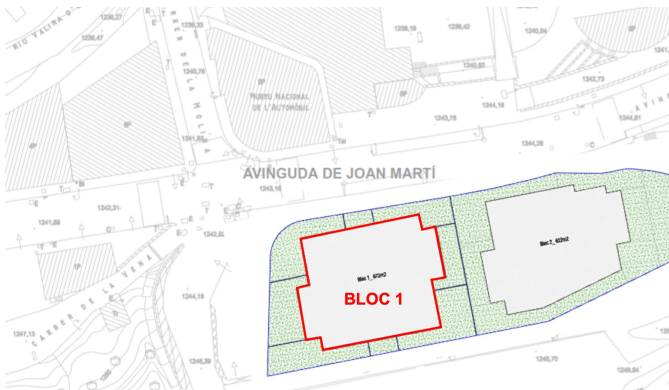
SECCION



UBICACION



JUNT RESIDENCIAL EL CALCINERA  
PLANTA BAIXA 4ª



Sotheby's International Realty® is a registered trademark licensed to Sotheby's International Realty Affiliates LLC. Each Sotheby's International Realty® office is independently owned and operated.

Andorra Sotheby's International Realty  
Calle Santa Anna, 14 AD700 Escaldes-Engordany Principado de Andorra  
Tel: +376 872 222 · Email: info@sir.ad

www.andorra-sothebysrealty.com